

ZAXIS-6 series

HITACHI

Reliable solutions

ZAXIS145W



HYDRAULIC EXCAVATOR

Model code : ZX145W-6

Engine rated power : 105 kW (ISO14396)

Operating weight : 15 000 – 17 200 kg

Bucket ISO heaped : 0.19 – 0.66 m³

ZX145W-6. NO COMPROMISE

Hitachi Zaxis-6 wheeled excavators are the ultimate universal working machines, exceptionally versatile for a variety of projects. The short-tail swing ZX145W-6 is ideal for working on narrow job sites, and is also easy to use and manoeuvre. It incorporates unique Hitachi technology, but without compromising on user-friendliness.

Built upon the success of Hitachi's crawler excavators, the ZX145W-6 benefits from the same high-quality engineering, reliability and durability. It offers excellent stability, powerful travel and swing forces, and impressive lifting capacity.



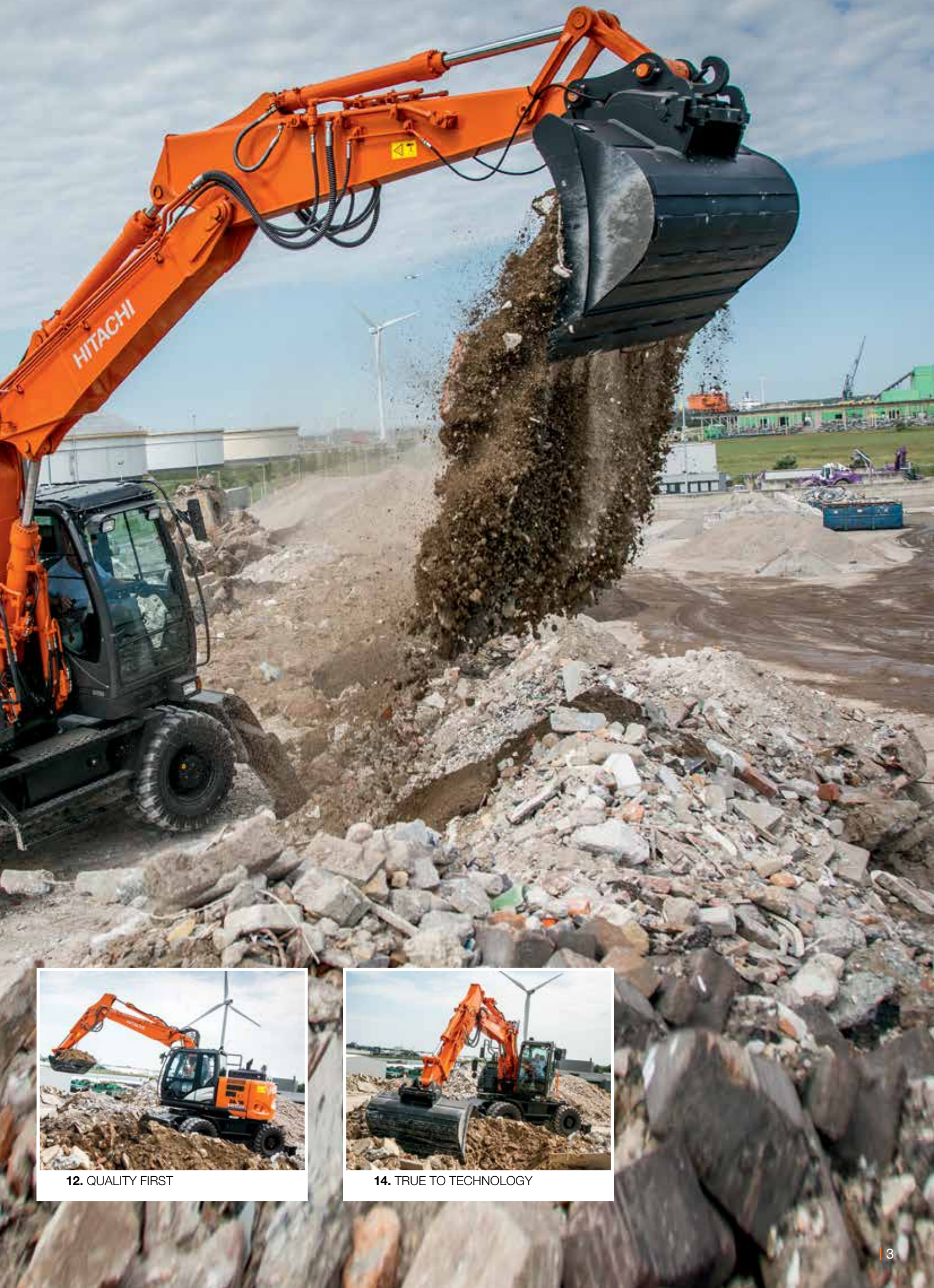
6. ULTIMATE RELIABILITY



8. DURABILITY REDEFINED



10. INVALUABLE VERSATILITY



12. QUALITY FIRST



14. TRUE TO TECHNOLOGY

DEMAND PERFECTION

The short-tail swing ZX145W-6 is a perfect fit for urban job sites, particularly where space is limited. Hitachi has developed it to perfection with more than 100 design updates.

Designed to provide greater durability, better performance and increased operational efficiency, the ZX145W-6 offers a lower total cost of ownership.



Optimum performance

Remote monitoring with Global e-Service online application.



High quality

Only the best design elements and materials.



Incredible versatility

Tilt and rotary tilt modes complete the attachment support system.



Lifetime reliability

Reliable components help to prevent oil leaks.



Ultimate durability

Solid and reliable undercarriage, modular in design.





User-friendly

Easily accessible cab with step and wide entry.



Low emissions

SCR and DPF systems reduce exhaust gas emissions.



Enhanced productivity

9% increase in productivity thanks to the new larger engine.



Short-tail swing

Convenient for working in urban areas.



Excellent efficiency

HIOS IV system reduces total hydraulic loss.



Improved travel speed

35% faster acceleration (0-30km/hr).



Easy maintenance

Convenient and wide-opening engine cover.



“ *There is a strong price/quality ratio with Hitachi excavators* ”

János Rozsnyai, Chief Engineer, Duna Aszfalt

ULTIMATE RELIABILITY

Hitachi Zaxis-6 wheeled excavators are known for their reliability to get the job done, day after day. Capable of optimum levels of performance and availability, they work efficiently and consistently without complications, and their easy maintenance features also help to minimise downtime.

Easy maintenance

The lightweight split-type engine hood opens widely for convenience. It provides easy access to the engine compartment and after-treatment device for routine maintenance.

User-friendly fuel filter

The main fuel filter screws into place on the ZX145W-6. This makes it easier to replace and ensures that dust is prevented from entering the fuel circuit during routine maintenance procedures.

More efficient cooling

The expansion tank is mounted on top of the engine's cooling system. This revised position means that the air can be completely removed and prevents the engine parts from overheating.

Durable hydraulic connection

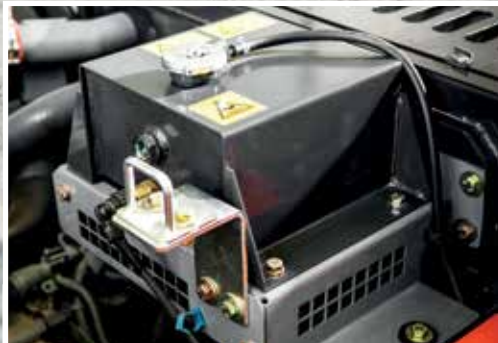
A rubber hose fitted with a flange has been incorporated into the design of the hydraulic return pipes. These enhance the reliability of the system and reduce the risk of oil leaks.



Easy access to the engine compartment.



The main fuel filter is easier to replace.



The expansion tank prevents engine parts from overheating.



Large blade cylinder cover offers greater protection.



High ground clearance reduces damage from obstacles.

i Customers in six countries (The Netherlands, Belgium, Germany, Norway, Sweden and Italy) tested the Zaxis-6 prototype extensively to ensure its reliability.



DURABILITY REDEFINED

The ZX145W-6 has been designed with durable features and components in order to achieve high levels of availability and operate reliably, even in difficult working environments. Thanks to its robust design, users and owners can rely on it to work, every time.



Strong front attachment

The brackets on the boom end and foot are equipped with bushings to withstand working for long periods in tough environments. The reinforced chassis adds to the durability of the ZX145W-6.

Greater protection

The blade cylinder cover is larger on the ZX145W-6 than the previous model. The outrigger's cylinder cover has also been reinforced. This enhances the reliability of both components.



Fuel-refilling unit enhances the reliability of the engine.

Reliable refuelling

The electric fuel-refilling unit is fitted with a standard filter, which prevents fuel contamination. This improves the engine's reliability.

High ground clearance

The ZX145W-6 utilises an integrated transmission axle for efficient power transmission. The transmission unit is also installed over the axle to reduce damage caused by hitting unexpected obstacles.



“ It’s a first-class machine – responsive, smooth and precise ”

Olav Kjaestad, operator, Skogen

INVALUABLE VERSATILITY

The ZX145W-6 is suitable for working in urban areas, particularly on roads and surfaces that can be damaged by crawler excavators, and where space is limited. For small companies, this versatile wheeled excavator may be the only machine they require. For larger businesses, it’s an invaluable addition to their fleet.

Greater flexibility

The rotary tilt and tilt modes are included within the attachment support system on the ZX145W-6. These and nine other modes can be registered on the monitor for the easy fitment of attachments to increase versatility.

Reduced maintenance

The counterweight has been redesigned and features LEDs in the tail lights. These not only provide better visibility in poor light, but also require less maintenance, which helps to reduce costs.

Excellent visibility

The cab of the Zaxis-6 wheeled excavator offers excellent visibility. It features a small steering column and a monitor positioned within the right pillar, so not to obscure the operator’s view of the job site.

Compact and powerful

The short-tail swing of the ZX145W-6 enables it to fit into confined spaces, which makes it suitable for a wider variety of job sites than the standard 14-tonne model. Its compact dimensions are combined with a powerful lifting force and good stability.



Two tilt modes add to the versatility of the ZX145W-6.



LED tail lights are easily maintained.



Minimal blind spots improve visibility.



Superior weather resistance maintains the cab's internal appearance.



Urea is injected into the exhaust gas to reduce emissions.

i Comments from customers and Hitachi personnel are reported at monthly product improvement meetings, held at Tsuchiura Works in Japan, to help maintain quality standards.



QUALITY FIRST

Every Hitachi wheeled excavator is rigorously checked before delivery for the highest possible standards of safety and reliability. The quality of its engineering and design is evident, not only from the superior materials used in the cab, but also its exceptional performance on the job site.



Ergonomic controls contribute to the ultimate workspace.



Superior cooling performance

The upper structure benefits from high-quality sealant (around the cooling package) and acoustic materials to eliminate any deterioration caused by heat. These ensure the long-term cooling and low-noise acoustic performance of the ZX145W-6.

Excellent weather resistance

The in cab console has been sculpted in highly durable AES-grade resin. This ensures superior weather resistance and ultimately prevents the sun's ultraviolet rays from damaging the console.

Reduced emissions

Hitachi has developed a selective catalytic reduction (SCR) system that injects urea into exhaust gas to reduce nitrogen oxide from emissions. This cutting-edge

technology not only helps the environment, but also complies with EU Stage IV emission regulations. The ZX145W-6 is also fitted with a DPF system that further reduces exhaust gas emissions.

Ultimate comfort

A fully adjustable seat, spacious cab, ergonomic controls and advanced music system all contribute to the ultimate working environment.

Safety at work

The ZX145W-6 has been fitted with a high-spec rollover protective structure-compliant (ROPS) and centre pillar reinforced structure (CRES V) cab. The pressurised cab is designed to protect the operator from the penetration of dust and potential job site risks.



“ Hitachi wheeled excavators are designed in Japan for the European market ”

Burkhard Janssen, General Manager Product Management & Engineering, Hitachi Construction Machinery (Europe) NV

TRUE TO TECHNOLOGY

Hitachi aims to meet the needs of the European construction industry by providing reliable solutions that stay true to its technological heritage. Incorporating unique and advanced technology, the innovative ZX145W-6 has been developed to enhance efficiency, improve performance and reduce the total cost of ownership for customers.

Greater productivity

The ZX145W-6 is equipped with a powerful new engine, which helps to boost productivity by 9% with the same level of fuel consumption as the Zaxis-5 model. HIOS IV technology reduces hydraulic loss, which results in excellent efficiency.

Fewer emissions

The ZX145W-6 has a diesel oxidation catalyst (DOC), urea mixing pipe, SCR system and silencer, as well as a DPF. This advanced technology helps to reduce emissions and noise levels.

User-friendly functionality

A large seven-inch multi-function LCD monitor provides a wide range of useful technical information. With multi-lingual support in up to 32 languages, it enables operators to check the machine's status and settings at a glance.

Remote monitoring

Global e-Service allows owners to monitor their fleets remotely via Owner's Site (24/7 online access) and ConSite (an automatic monthly report). These help to maximise efficiency, minimise downtime and improve overall performance.

Advanced audio system

The AM/FM radio is accessible from the monitor and an auxiliary socket – for devices such as MP3 players – is linked to the sound system. This choice of entertainment helps to provide an enjoyable – and productive – working environment.



9% increase in productivity thanks to the new larger engine.



The LCD monitor shows the machine's status and settings.



The SCR system reduces emissions and noise levels.



“ *The total cost of ownership is of maximum benefit to our company* ”

Peter Kögel, Member of the Management Board,
Kögel Bau GmbH & Co. KG

REDUCING THE TOTAL COST OF OWNERSHIP



Hitachi has created the Support Chain after-sales programme to ensure optimum efficiency, as well as minimal downtime, reduced running costs and high resale values.

Global e-Service

Hitachi has developed two remote monitoring systems as part of its Global e-Service online application. Owner's Site and ConSite are an integral part of the excavator, which sends operational data daily via GPRS or satellite to www.globaleservice.com. This allows immediate access to the Owner's Site, and the vital information that is required for support on job sites.

Comparing the ratio of operating and non-operating hours helps to enhance efficiency. Effective management of maintenance programmes helps to

maximise availability. Running costs can also be managed by analysing the fuel consumption. The location and movements of each machine are clearly displayed for essential planning.

An automatic service report – ConSite – sends a monthly email summarising the information from Global e-Service for each machine. This includes: daily working hours and fuel consumption data; statistics on the operating mode ratio, plus a comparison for fuel consumption/efficiency, and CO₂ emissions.

Technical support

Each Hitachi service technician receives full technical training from HCME in Amsterdam. These sessions provide access to the same technical knowledge available within the Hitachi quality assurance departments and design centres. Technicians combine this global expertise with the local language and culture of the customer to provide the highest level of after-sales support.

Extended warranty and service contracts

Every new Hitachi Zaxis-6 model is covered by a full manufacturer's warranty. For



Global e-Service



Technical support



Hitachi Parts

extra protection – due to severe working conditions or to minimise equipment repair costs – Hitachi dealers offer a unique extended warranty called HELP (Hitachi Extended Life Program) and comprehensive service contracts. These can help to optimise the performance of each machine, reduce downtime and ensure higher resale values.

Parts

Hitachi offers a wide range and a high availability of parts dispatched from the

53,000 m² HCME European Parts Depot in The Netherlands.

- Hitachi Genuine Parts: allow machines to work for longer, with lower running and maintenance costs.
- Hitachi Select Parts and 2Genuine Parts: especially for older machines, they cost less, are of proven quality and come with the manufacturer's warranty.

- Performance Parts: to cope with highly demanding conditions, they have been engineered for greater durability, better performance or longer life.
- Remanufactured components: offering an economically viable solution, they are the best option when preventative replacements are required.

Whatever the choice, the renowned quality of Hitachi construction machinery is assured.



EH dump trucks



EX ultra-large excavators



ZW wheel loaders



“ We develop construction machinery that contributes to the creation of affluent and comfortable societies ”

Yuichi Tsujimoto, HCM President

BUILDING A BETTER FUTURE

Established in 1910, Hitachi, Ltd. was built upon a founding philosophy of making a positive contribution to society through technology. This is still the inspiration behind the Hitachi group's reliable solutions that answer today's challenges and help to create a better world.

Hitachi, Ltd. is now one of the world's largest corporations, with a vast range of innovative products and services. These have been created to challenge convention, improve social infrastructure and contribute to a sustainable society.

Hitachi Construction Machinery Co., Ltd. (HCM) was founded in 1970 as a subsidiary of Hitachi, Ltd. and has become one of the world's largest construction equipment suppliers. A pioneer in producing hydraulic excavators, HCM also manufactures wheel loaders, rigid dump trucks, crawler cranes and special application machines at state-of-the-art facilities across the globe.

Incorporating advanced technology, Hitachi construction machinery has a reputation for the highest quality standards. Suitable for a wide range of industries, it is always

hard at work around the world – helping to create infrastructure for a safe and comfortable way of living, developing natural resources and supporting disaster relief efforts.

Hitachi Zaxis excavators are renowned for being reliable, durable and versatile – capable of delivering the highest levels of productivity under the most challenging of conditions. They are designed to provide owners with a reduced total cost of ownership, and operators with the ultimate level of comfort and safety.



Mini excavators

SPECIFICATIONS

ENGINE

Model	DEUTZ TCD4.1L4
Type	4-cycle water-cooled, common rail direct injection
Aspiration	Turbocharged with waste gate, intercooled, cooled EGR
Aftertreatment	DOC and DPF and SCR system
No. of cylinders	4
Rated power	
ISO 14396	105 kW at 2 000 min ⁻¹
ISO 9249, nett	100 kW at 2 000 min ⁻¹
SAE J1349, net	100 kW at 2 000 min ⁻¹
Maximum torque	550 Nm at 1 600 min ⁻¹
Piston displacement	4.038 L
Bore and stroke	101.0 mm x 126.0 mm
Batteries	2 x 12 V / 93 Ah

HYDRAULIC SYSTEM

Hydraulic Pumps

Main pumps	2 variable displacement axial piston pumps
Maximum oil flow	2 x 117 L/min
Pilot pump	1 gear pump
Maximum oil flow	23.4 L/min
Steering pump	1 gear pump
Maximum oil flow	23.5 L / min

Hydraulic Motors

Travel	1 variable displacement axial piston motor
Swing	1 axial piston motor

Relief Valve Settings

Implement circuit	34.3 MPa
Swing circuit	32.4 MPa
Travel circuit	34.3 MPa
Pilot circuit	3.9 MPa
Power boost	36.3 MPa

Hydraulic Cylinders

	Quantity	Bore	Rod diameter
Boom (Monoblock boom)	2	105 mm	70 mm
Boom ¹ (2-piece boom)	2	105 mm	75 mm
Arm	1	115 mm	80 mm
Bucket	1	100 mm	70 mm
Positioning *	1	145 mm	90 mm

* : For 2-piece boom

UPPERSTRUCTURE

Revolving Frame

D-section frame for resistance to deformation.

Swing Device

Axial piston motor with planetary reduction gear is bathed in oil. Swing circle is single-row. Swing parking brake is spring-set/hydraulic-released disc type.

Swing speed	11.9 min ⁻¹
Swing torque	34 kNm

Operator's Cab

Independent spacious cab, 1 005 mm wide by 1 675 mm high, conforming to ISO* Standards.

* International Organization for Standardization

UNDERCARRIAGE

Wheeled type undercarriage. The frame is of welded, stress-relieved structure.

Drive system: 2 speed power shift transmission and variable displacement axial piston type travel motor.

Travel speed (forward and reverse)

Creeper speed range	0 to 2.2 km / h
Low speed range	0 to 2.7 km / h : Rear blade only spec
High speed range	0 to 8.6 km / h
Maximum traction force	0 to 35 km / h
Maximum traction force	102 kN
Gradeability	74 kN : Rear blade only spec
Gradeability	70% (35 degree)
Min. turning radius.....	50% (26 degree) : Rear blade only spec
Min. turning radius.....	6 800 mm
Min. turning radius.....	6 600 mm : Rear blade only spec

Axle:

All-wheel drive.

The front axle can be locked hydraulically in any position.

Oscillating front axle..... ± 7°

Brakes system:

Maintenance free wet-disc brakes on axle are standard.

Fully hydraulic service brake system

SOUND LEVEL

Sound level in cab according to ISO 6396 LpA 71 dB(A)

External sound level according to ISO 6395 and

EU Directive 2000/14/EC LwA 100 dB(A)

SERVICE REFILL CAPACITIES

Fuel tank	250.0 L
Engine coolant	22.7 L
Engine oil	11.5 L
Swing device	6.2 L
Transmission	2.5 L
Front differential gear (STD axle / Rear blade spec axle)	9.1 L / 9.0 L
Rear differential gear (STD axle / Rear blade spec axle).....	11.8 L / 11.2 L
Hub reduction gear	
Front axle (STD axle / Rear blade spec axle)	2 x 2.5 L / 2 x 2.4 L
Rear axle (STD axle / Rear blade spec axle)	2 x 2.5 L / 2 x 2.4 L
Hydraulic system	177.0 L
Hydraulic tank	84.0 L
DEF/AdBlue® tank	26.0 L

WEIGHTS

Operating Weight

Arm length	Stabilization	Monoblock	2-Piece
		kg	kg
2.10 m	Rear Blade	15 000	15 400
	Rear Outrigger	15 600	16 000
	Outrigger and Blade	16 400	16 800
	Front and Rear Outrigger	16 700	17 100
2.52 m	Rear Blade	15 000	15 400
	Rear Outrigger	15 600	16 000
	Outrigger and Blade	16 400	16 900
	Front and Rear Outrigger	16 700	17 100
3.01 m	Rear Blade	15 100	15 500
	Rear Outrigger	15 700	16 100
	Outrigger and Blade	16 500	16 900
	Front and Rear Outrigger	16 800	17 200

Including 0.50 m³ (ISO heaped), bucket weight (420 kg) and counterweight (3 200 kg).

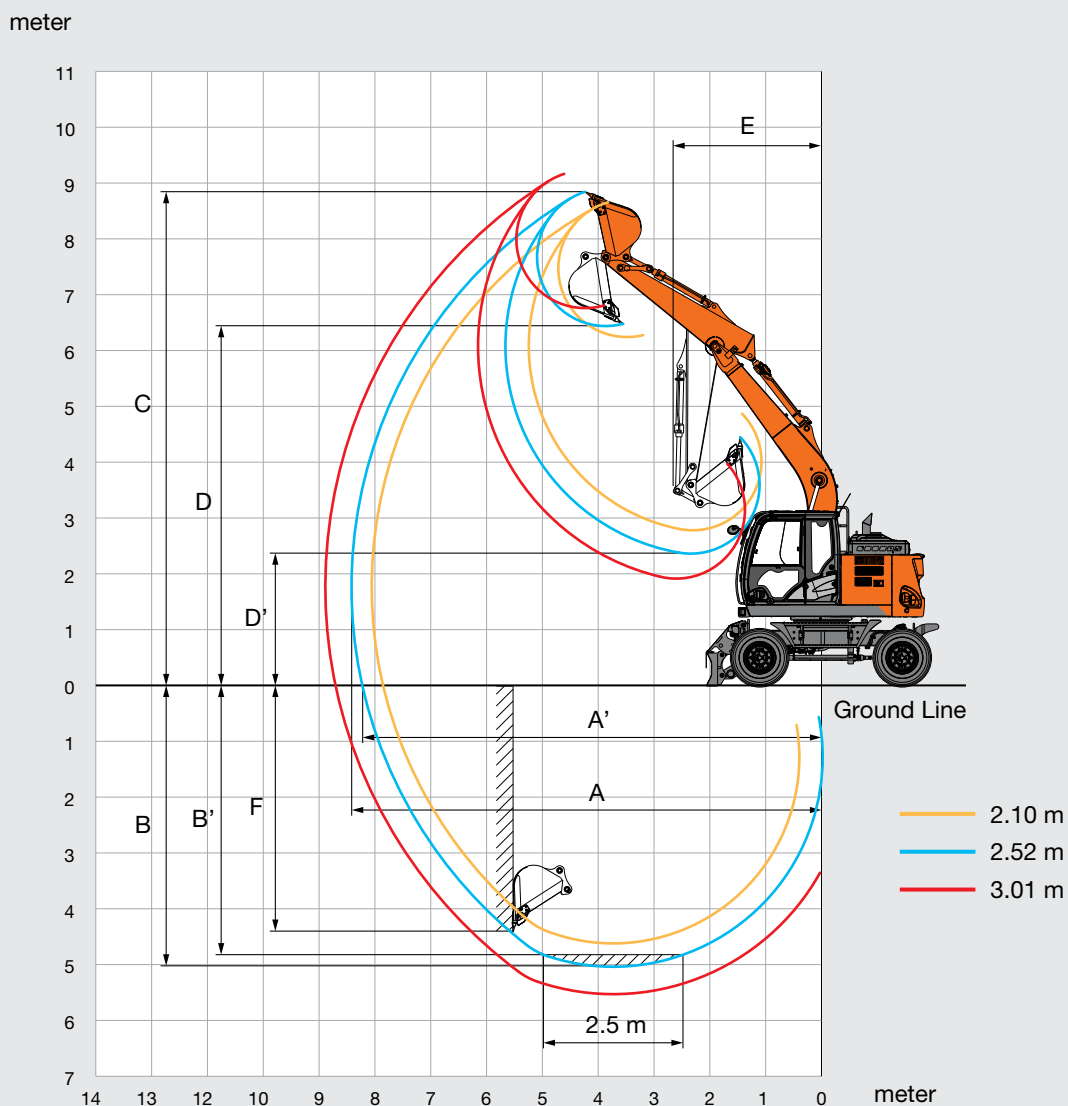
BUCKET AND ARM DIGGING FORCE

Arm length	ZAXIS 145W		
	2.10 m	2.52 m	3.01 m
Bucket digging force* ISO	104 kN		
Bucket digging force* SAE : PCSA	91 kN		
Arm crowd force* ISO	77 kN	69 kN	61 kN
Arm crowd force* SAE : PCSA	74 kN	67 kN	60 kN

* At power boost

SPECIFICATIONS

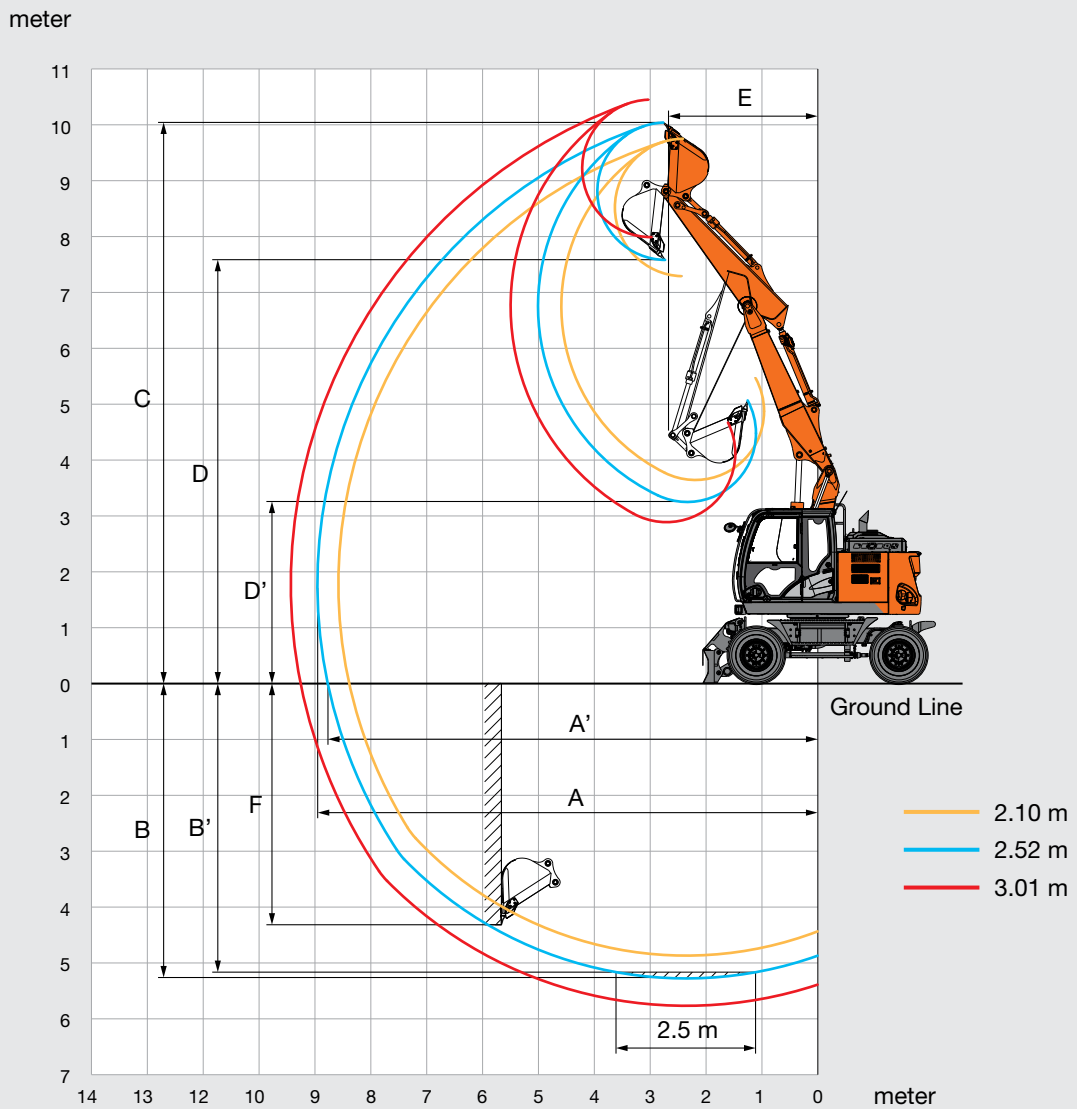
WORKING RANGES: MONOBLOCK BOOM



Unit: mm

	ZAXIS 145W		
	Monoblock boom		
Arm length	2.10 m	2.52 m	3.01 m
A Max. digging reach	8 040	8 410	8 870
A' Max. digging reach (on ground)	7 840	8 210	8 690
B Max. digging depth	4 610	5 030	5 520
B' Max. digging depth for 2.5 m level	4 380	4 830	5 340
C Max. cutting height	8 660	8 850	9 160
D Max. dumping height	6 240	6 440	6 760
D' Min. dumping height	2 790	2 370	1 920
E Min. swing radius	2 610	2 650	2 910
F Max. vertical wall digging depth	4 110	4 520	4 990

WORKING RANGES: 2-PIECE BOOM



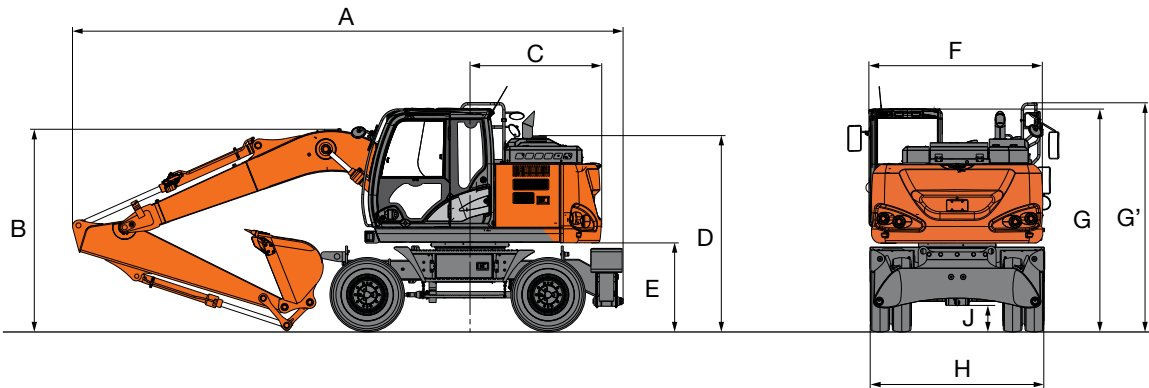
Unit: mm

	ZAXIS 145W		
	2-Piece boom		
Arm length	2.10 m	2.52 m	3.01 m
A Max. digging reach	8 580	8 960	9 430
A' Max. digging reach (on ground)	8 390	8 780	9 260
B Max. digging depth	4 870	5 290	5 770
B' Max. digging depth for 2.5 m level	4 760	5 180	5 670
C Max. cutting height	9 750	10 040	10 450
D Max. dumping height	7 290	7 570	7 990
D' Min. dumping height	3 640	3 250	2 890
E Min. swing radius	2 520	2 670	3 040
F Max. vertical wall digging depth	3 970	4 330	4 790

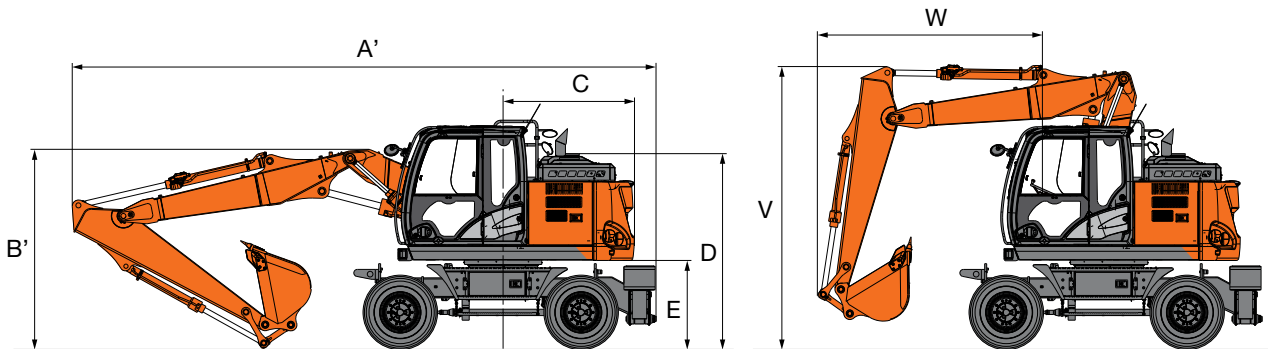
SPECIFICATIONS

DIMENSIONS

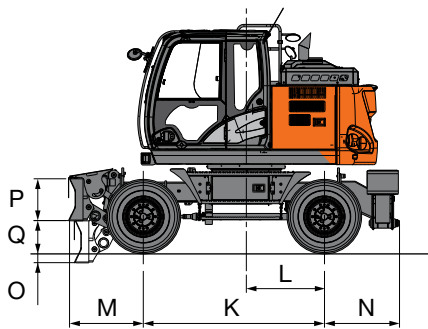
MONOBLOCK BOOM



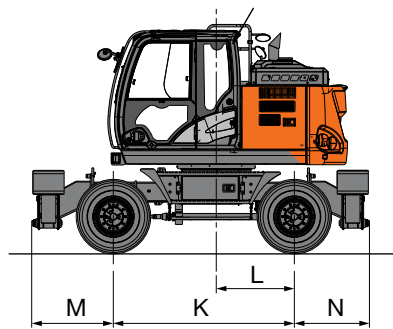
2-PIECE BOOM



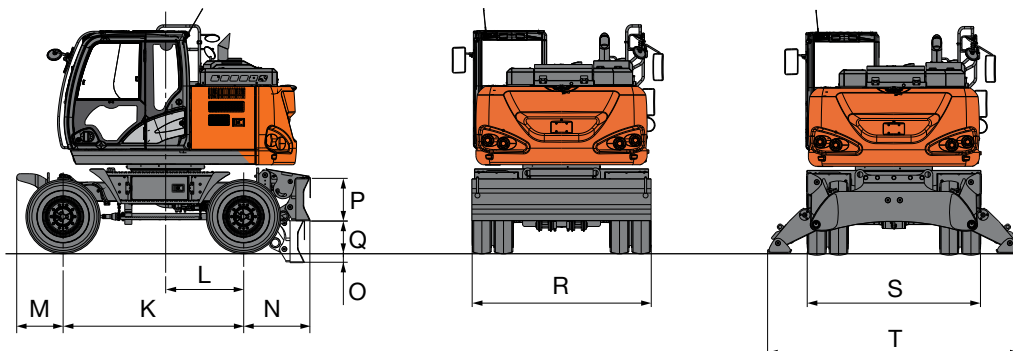
FRONT BLADE AND REAR OUTRIGGER



FRONT AND REAR OUTRIGGER



REAR BLADE



DIMENSIONS

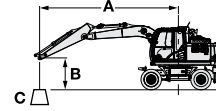
Unit: mm

		Rear BL	Rear O/R	Front BL Rear O/R	Front O/R Rear BL	Front and Rear O/R
A	Overall length (with monoblock boom)					
	Arm 2.10 m	7 610	7 730	7 690	7 730	
	Arm 2.52 m	7 650	7 770	7 730	7 770	
	Arm 3.01 m	7 630	7 750	7 710	7 750	
A'	Overall length (with 2-piece boom)					
	Arm 2.10 m	8 110	8 230	8 190	8 230	
	Arm 2.52 m	8 120	8 240	8 200	8 240	
	Arm 3.01 m	8 090	8 210	8 170	8 210	
B	Overall height of boom (with monoblock boom)					
	Arm 2.10 m			2 860		
	Arm 2.52 m			2 950		
	Arm 3.01 m			3 240		
B'	Overall height of boom (with 2-piece boom)					
	Arm 2.10 m			3 000		
	Arm 2.52 m			3 110		
	Arm 3.01 m			3 350		
C	Rear-end swing radius			1 850		
D	Engine cover height			2 710		
E	Counterweight clearance			1 215		
F	Overall width of upper structure			2 480		
G	Overall height of cabin			3 130		
G'	Overall height of handrail			3 220		
H	Overall width tires	2 550		2 490		
J	Min. ground clearance	300	320	300		320
K	Wheel base			2 550		
L	Swing-centre to rear axle			1 100		
M	Front overhang	655		1 055		1 150
N	Rear overhang	945	1 060		965	1 060
O	Max. blade lower	145	–	145		–
P	Height of blade	590	–	590		–
Q	Max. blade raise	445	–	445		–
R	Overall width of blade	2 530	–	2 530		–
S	Overall width of O/R retract	–		2 470		
T	Overall width O/R extend	–		3 380		
V	Overall height of boom (travelling)					
	Arm 2.10 m			4 000		
	Arm 2.52 m			4 000		
	Arm 3.01 m			3 750		
W	Front overhang (travelling)					
	Arm 2.10 m			2 870		
	Arm 2.52 m			3 090		
	Arm 3.01 m			4 890		

Transportation dimensions are A (A'), B (B'), H (without blade) or A (A'), B (B'), R (with blade).

LIFTING CAPACITIES

- Notes:
1. Ratings are based on ISO 10567.
 2. Lifting capacity does not exceed 75% of tipping load with the machine on firm, level ground or 87% full hydraulic capacity.
 3. The load point is the center-line of the bucket pivot mounting pin on the arm.
 4. *Indicates load limited by hydraulic capacity.
 5. Each value with Rear blade up over the Front-axle side and each value with Rear blade down over the Rear-axle side respectively, and value in optimal position with positioning cylinder.
 6. 0 m = Ground.





A: Load radius
B: Load point height
C: Lifting capacity






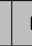






For lifting capacities, subtract bucket and quick hitch weight from lifting capacities without bucket.

ZAXIS 145W MONOBLOCK BOOM, ARM 2.52 M, 3 200 KG COUNTERWEIGHT Rating over-front or rear Rating over-side or 360 degrees Unit : kg

Stabilization		Load radius								At max. reach		
		1.5 m		3.0 m		4.5 m		6.0 m				meter
6.0 m	Rear blade up (over front)					*3 560	*3 560			*2 440	*2 440	5.73
	Rear blade down (over rear)					*3 560	*3 560			*2 440	*2 440	
	Rear outrigger down (over rear)					*3 560	*3 560			*2 440	*2 440	
	Front outrigger and rear blade down (over rear)					*3 560	*3 560			*2 440	*2 440	
	Front blade and rear outrigger down (over rear)					*3 560	*3 560			*2 440	*2 440	
	4 outrigger down (over rear)					*3 560	*3 560			*2 440	*2 440	
4.5 m	Rear blade up (over front)					*3 950	3 700	*3 730	2 380	*2 310	2 020	6.61
	Rear blade down (over rear)					*3 950	*3 950	*3 730	2 700	*2 310	*2 310	
	Rear outrigger down (over rear)					*3 950	*3 950	*3 730	3 230	*2 310	*2 310	
	Front outrigger and rear blade down (over rear)					*3 950	*3 950	*3 730	*3 730	*2 310	*2 310	
	Front blade and rear outrigger down (over rear)					*3 950	*3 950	*3 730	*3 730	*2 310	*2 310	
	4 outrigger down (over rear)					*3 950	*3 950	*3 730	*3 730	*2 310	*2 310	
3.0 m	Rear blade up (over front)			*7 130	6 360	*4 900	3 500	3 780	2 300	*2 330	1 790	7.07
	Rear blade down (over rear)			*7 130	*7 130	*4 900	4 010	*4 070	2 620	*2 330	2 040	
	Rear outrigger down (over rear)			*7 130	*7 130	*4 900	4 840	*4 070	3 150	*2 330	*2 330	
	Front outrigger and rear blade down (over rear)			*7 130	*7 130	*4 900	*4 900	*4 070	3 980	*2 330	*2 330	
	Front blade and rear outrigger down (over rear)			*7 130	*7 130	*4 900	*4 900	*4 070	*4 070	*2 330	*2 330	
	4 outrigger down (over rear)			*7 130	*7 130	*4 900	*4 900	*4 070	*4 070	*2 330	*2 330	
1.5 m	Rear blade up (over front)					5 640	3 270	3 680	2 200	*2 480	1 710	7.17
	Rear blade down (over rear)					*5 920	3 780	*4 490	2 530	*2 480	1 960	
	Rear outrigger down (over rear)					*5 920	4 600	*4 490	3 050	*2 480	2 370	
	Front outrigger and rear blade down (over rear)					*5 920	*5 920	*4 490	3 880	*2 480	*2 480	
	Front blade and rear outrigger down (over rear)					*5 920	*5 920	*4 490	4 000	*2 480	*2 480	
	4 outrigger down (over rear)					*5 920	*5 920	*4 490	*4 490	*2 480	*2 480	
0 m (Ground)	Rear blade up (over front)			*6 300	5 540	5 470	3 130	3 600	2 130	*2 820	1 760	6.94
	Rear blade down (over rear)			*6 300	*6 300	*6 480	3 630	*4 740	2 450	*2 820	2 020	
	Rear outrigger down (over rear)			*6 300	*6 300	*6 480	4 440	*4 740	2 980	*2 820	2 440	
	Front outrigger and rear blade down (over rear)			*6 300	*6 300	*6 480	5 760	*4 740	3 800	*2 820	*2 820	
	Front blade and rear outrigger down (over rear)			*6 300	*6 300	*6 480	5 980	*4 740	3 930	*2 820	*2 820	
	4 outrigger down (over rear)			*6 300	*6 300	*6 480	*6 480	*4 740	4 580	*2 820	*2 820	
-1.5 m	Rear blade up (over front)	*5 260	*5 260	*9 500	5 550	5 430	3 090	3 580	2 120	3 320	1 980	6.35
	Rear blade down (over rear)	*5 260	*5 260	*9 500	6 590	*6 340	3 590	*4 530	2 440	*3 510	2 270	
	Rear outrigger down (over rear)	*5 260	*5 260	*9 500	8 340	*6 340	4 400	*4 530	2 960	*3 510	2 750	
	Front outrigger and rear blade down (over rear)	*5 260	*5 260	*9 500	*9 500	*6 340	5 720	*4 530	3 780	*3 510	3 510	
	Front blade and rear outrigger down (over rear)	*5 260	*5 260	*9 500	*9 500	*6 340	5 930	*4 530	3 910	*3 510	*3 510	
	4 outrigger down (over rear)	*5 260	*5 260	*9 500	*9 500	*6 340	*6 340	*4 530	*4 530	*3 510	*3 510	
-3.0 m	Rear blade up (over front)			*7 740	5 670	*5 250	3 150			*4 130	2 590	5.26
	Rear blade down (over rear)			*7 740	6 710	*5 250	3 650			*4 130	2 980	
	Rear outrigger down (over rear)			*7 740	*7 740	*5 250	4 470			*4 130	3 620	
	Front outrigger and rear blade down (over rear)			*7 740	*7 740	*5 250	*5 250			*4 130	*4 130	
	Front blade and rear outrigger down (over rear)			*7 740	*7 740	*5 250	*5 250			*4 130	*4 130	
	4 outrigger down (over rear)			*7 740	*7 740	*5 250	*5 250			*4 130	*4 130	

ZAXIS 145W 2-PIECE BOOM, ARM 2.52 M, 3 200 KG COUNTERWEIGHT

 Rating over-front or rear  Rating over-side or 360 degrees Unit : kg

Stabilization		Load radius										At max. reach		
		1.5 m		3.0 m		4.5 m		6.0 m		7.5 m				meter
														
7.5 m	Rear blade up (over front)					*3 820	3 790					*2 840	*2 840	5.04
	Rear blade down (over rear)					*3 820	*3 820					*2 840	*2 840	
	Rear outrigger down (over rear)					*3 820	*3 820					*2 840	*2 840	
	Front outrigger and rear blade down (over rear)					*3 820	*3 820					*2 840	*2 840	
	Front blade and rear outrigger down (over rear)					*3 820	*3 820					*2 840	*2 840	
	4 outrigger down (over rear)					*3 820	*3 820					*2 840	*2 840	
6.0 m	Rear blade up (over front)					*3 740	*3 740	*3 490	2 400			*2 440	2 110	6.41
	Rear blade down (over rear)					*3 740	*3 740	*3 490	2 730			*2 440	2 410	
	Rear outrigger down (over rear)					*3 740	*3 740	*3 490	3 270			*2 440	*2 440	
	Front outrigger and rear blade down (over rear)					*3 740	*3 740	*3 490	*3 490			*2 440	*2 440	
	Front blade and rear outrigger down (over rear)					*3 740	*3 740	*3 490	*3 490			*2 440	*2 440	
	4 outrigger down (over rear)					*3 740	*3 740	*3 490	*3 490			*2 440	*2 440	
4.5 m	Rear blade up (over front)			*4 360	*4 360	*4 280	3 710	*3 730	2 450			*2 300	1 710	7.21
	Rear blade down (over rear)			*4 360	*4 360	*4 280	4 190	*3 730	2 790			*2 300	1 970	
	Rear outrigger down (over rear)			*4 360	*4 360	*4 280	*4 280	*3 730	3 270			*2 300	*2 300	
	Front outrigger and rear blade down (over rear)			*4 360	*4 360	*4 280	*4 280	*3 730	*3 730			*2 300	*2 300	
	Front blade and rear outrigger down (over rear)			*4 360	*4 360	*4 280	*4 280	*3 730	*3 730			*2 300	*2 300	
	4 outrigger down (over rear)			*4 360	*4 360	*4 280	*4 280	*3 730	*3 730			*2 300	*2 300	
3.0 m	Rear blade up (over front)			*6 860	6 360	*5 210	3 620	3 790	2 440	2 660	1 580	*2 300	1 520	7.62
	Rear blade down (over rear)			*6 860	*6 860	*5 210	4 070	*4 090	2 770	*2 950	1 820	*2 300	1 760	
	Rear outrigger down (over rear)			*6 860	*6 860	*5 210	4 800	*4 090	3 240	*2 950	2 210	*2 300	2 140	
	Front outrigger and rear blade down (over rear)			*6 860	*6 860	*5 210	*5 210	*4 090	*3 960	*2 950	2 810	*2 300	*2 300	
	Front blade and rear outrigger down (over rear)			*6 860	*6 860	*5 210	*5 210	*4 090	4 070	*2 950	2 900	*2 300	*2 300	
	4 outrigger down (over rear)			*6 860	*6 860	*5 210	*5 210	*4 090	*4 090	*2 950	*2 950	*2 300	*2 300	
1.5 m	Rear blade up (over front)	*6 380	*6 380	*8 200	*6 240	5 620	3 580	3 780	2 360	2 620	1 540	*2 410	1 460	7.72
	Rear blade down (over rear)	*6 380	*6 380	*8 200	7 170	*6 040	*4 030	*4 450	2 690	*3 600	1 790	*2 410	1 690	
	Rear outrigger down (over rear)	*6 380	*6 380	*8 200	*8 200	*6 040	4 740	*4 450	3 220	*3 600	2 180	*2 410	2 070	
	Front outrigger and rear blade down (over rear)	*6 380	*6 380	*8 200	*8 200	*6 040	5 840	*4 450	3 940	*3 600	2 770	*2 410	*2 410	
	Front blade and rear outrigger down (over rear)	*6 380	*6 380	*8 200	*8 200	*6 040	6 010	*4 450	*4 040	*3 600	2 860	*2 410	*2 410	
	4 outrigger down (over rear)	*6 380	*6 380	*8 200	*8 200	*6 040	*6 040	*4 450	*4 450	*3 600	3 320	*2 410	*2 410	
0 m (Ground)	Rear blade up (over front)	*8 080	*8 080	*9 520	6 310	5 650	3 540	3 730	2 230	2 580	1 500	2 570	1 490	7.51
	Rear blade down (over rear)	*8 080	*8 080	*9 520	7 260	*6 310	4 060	*4 600	2 560	*2 750	1 740	*2 660	1 730	
	Rear outrigger down (over rear)	*8 080	*8 080	*9 520	8 740	*6 310	4 800	*4 600	3 100	*2 750	2 130	*2 660	2 120	
	Front outrigger and rear blade down (over rear)	*8 080	*8 080	*9 520	*9 520	*6 310	*5 870	*4 600	3 930	*2 750	2 730	*2 660	*2 660	
	Front blade and rear outrigger down (over rear)	*8 080	*8 080	*9 520	*9 520	*6 310	6 030	*4 600	4 060	*2 750	*2 750	*2 660	*2 660	
	4 outrigger down (over rear)	*8 080	*8 080	*9 520	*9 520	*6 310	*6 310	*4 600	4 570	*2 750	*2 750	*2 660	*2 660	
-1.5 m	Rear blade up (over front)	*12 370	*12 370	*10 140	6 070	5 790	3 360	3 610	2 110			2 860	1 660	6.97
	Rear blade down (over rear)	*12 370	*12 370	*10 140	7 170	*6 400	3 880	*4 670	2 440			*3 150	1 920	
	Rear outrigger down (over rear)	*12 370	*12 370	*10 140	9 000	*6 400	4 720	*4 670	2 970			*3 150	2 350	
	Front outrigger and rear blade down (over rear)	*12 370	*12 370	*10 140	*10 140	*6 400	6 060	*4 670	3 810			*3 150	3 020	
	Front blade and rear outrigger down (over rear)	*12 370	*12 370	*10 140	*10 140	*6 400	*6 210	*4 670	3 940			*3 150	3 120	
	4 outrigger down (over rear)	*12 370	*12 370	*10 140	*10 140	*6 400	*6 400	*4 670	4 600			*3 150	*3 150	
-3.0 m	Rear blade up (over front)	*18 500	*18 500	*10 450	5 940	5 570	3 170					3 860	2 240	5.69
	Rear blade down (over rear)	*18 500	*18 500	*10 450	7 030	*6 250	3 680					*3 910	2 590	
	Rear outrigger down (over rear)	*18 500	*18 500	*10 450	8 840	*6 250	4 510					*3 910	3 170	
	Front outrigger and rear blade down (over rear)	*18 500	*18 500	*10 450	*10 450	*6 250	5 860					*3 910	*3 910	
	Front blade and rear outrigger down (over rear)	*18 500	*18 500	*10 450	*10 450	*6 250	6 080					*3 910	*3 910	
	4 outrigger down (over rear)	*18 500	*18 500	*10 450	*10 450	*6 250	*6 250					*3 910	*3 910	

EQUIPMENT

ENGINE

Aftertreatment device	●
Air cleaner double filters	●
Alternator 100 A	●
Auto idle system	●
Auto shut-down control	●
Cartridge-type engine oil filter	●
Cartridge-type fuel main filter	●
DEF/AdBlue® tank inlet strainer and extension filter	●
DEF/AdBlue® tank with ISO magnet adapter	●
Dry-type air filter with evacuator valve (with air filter restriction indicator)	●
Dust-proof indoor net	●
ECO/PWR mode control	●
Engine oil drain coupler	●
Expansion tank	●
Fan guard	●
Fuel pre-filter with water separator	●
Isolation-mounted engine	●
Maintenance free pre-cleaner	○
Radiator, oil cooler and intercooler	●

HYDRAULIC SYSTEM

Auto power lift	●
Control valve with main relief valve	●
Extra port for control valve	●
Full-flow filter	●
High mesh full flow filter with restriction indicator	○
Hose rupture valve for arm	●
Hose rupture valve for boom	●
Pilot filter	●
Power boost	●
Shockless valve in pilot circuit	●
Steering filter	●
Suction filter	●
Swing dampener valve	●
Variable reliefvalve for breaker & crusher	●
Work mode selector	●

CAB

All-weather sound suppressed steel cab	●
AM-FM radio	●
Ashtray	●
Auto control air conditioner	●
AUX function lever (Breaker assist)	●
AUX terminal and storage	●
Cigarette lighter 24 V	●
CRES V (Center pillar reinforced structure) cab	●
Drink holder with hot & cool function	●
Electric double horn	●
Engine shut-off switch	●
Equipped with reinforced, tinted (green color) glass windows	●
Evacuation hammer	●
Floor mat	●
Footrest	●
Front window washer	●
Hot & cool box	●
Intermittent windshield wipers	●
Key cylinder light	●
Laminated round glass window	○
LED room light with door courtesy	●
OPG top guard Level II (ISO10262) compliant cab	○
Pilot control shut-off lever	●
Power outlet 12 V	○
Rain guard	●
Rear tray	●
Retractable seat belt	●
ROPS (ISO12117-2) compliant cab	●
Rubber radio antenna	●
Seat : air suspension seat with heater	●
Seat adjustment part : backrest, armrest, height and angle, slide forward / back	●
Short wrist control levers	●
Sun visor	●
Transparent roof with slide curtain	●
Windows on front, upper, lower and left side can be opened	●
2 speakers	●
4 fluid-filled elastic mounts	●

MONITOR SYSTEM

Alarms: overheating, engine warning, engine oil pressure, alternator, minimum fuel level, hydraulic filter restriction, air filter restriction, work mode, overload, SCR system trouble, etc	●
Alarm buzzers: overheating, engine oil pressure, overload, SCR system trouble	●
Attachment operational information	●
Display of meters: Speedometer, Tachometer, Tripmeter, water temperature, hour, fuel rate, clock, DEF/AdBlue® rate	●
Other displays: work mode, auto-idle, glow, rearview monitor, operating conditions, etc	●
32 languages selection	●

LIGHTS

Additional boom light with cover	○
Additional cab roof front lights	○
Additional cab roof rear lights	○
Brake lamps	●
Clearance lamps	●
Hazard lamps	●
Licence lamp	○
Rotating lamp	○
Turn signal lamps	●
Working lights	●
2 working lights	●

UPPER STRUCTURE

Batteries 2 x 93 Ah	●
Battery disconnect switch	●
Body top handrail	●
Counterweight 3 200 kg	●
Electric fuel refilling pump with auto stop and filter	●
Fuel level float	●
Handrail (cab top)	●
Handrail (platform)	●
Hydraulic oil level gauge	●
Rear view camera	●
Rear view mirror (right & left side)	●
Side view camera	○
Skid-resistant plates and handrails	●
Swing parking brake	●
Undercover	●

○ : Optional equipment

UNDERCARRIAGE

Clamshell bracket	○
Front cover	○
Front dozer blade + rear outrigger	○
Front outrigger + rear dozer blade	○
Front outrigger + rear outrigger	○
Parking brake	●
Rear dozer blade	○
Rear outrigger	○
Right toolbox	○
Toolbox: left chassis	●
Traction types pattern tires (10.00-20 14PR)	●
Tire spacer	●
4 tie down brackets	●

FRONT ATTACHMENTS

Casted bucket link A	●
Centralized lubrication system	●
Dirt seal on all bucket pins	●
Flanged pin	●
HN bushing	●
Reinforced link B	○
Reinforced resin thrust plate	●
WC (tungsten-carbide) thermal spraying	●
Welded bucket link A	○

ATTACHMENTS

Accessories for 2 speed selector	○
Additional pump (30 L/min)	○
Assist piping	○
Attachment basic piping	●
Breaker and crusher piping	●
Clamshell piping	○
HSB Parts for breaker and crusher	●
Pilot accumulator	●
PTO valve	○

MISCELLANEOUS

Global e-Service	●
Lockable fuel refilling cap	●
Lockable machine covers	●
Onboard information controller	●
Standard tool kit	●
Travel direction mark on chassis frame	●

Standard and optional equipment may vary by country, so please consult your Hitachi dealer for details.

Prior to operating this machine, including satellite communication system, in a country other than a country of its intended use, it may be necessary to make modifications to it so that it complies with the local regulatory standards (including safety standards) and legal requirements of that particular country. Please do not export or operate this machine outside the country of its intended use until such compliance has been confirmed. Please contact your Hitachi dealer in case of questions about compliance.

These specifications are subject to change without notice. Illustrations and photos show the standard models, and may or may not include optional equipment, accessories, and all standard equipment with some differences in color and features. Before use, read and understand the Operator's Manual for proper operation.

